

SACRIFICIAL ANODES

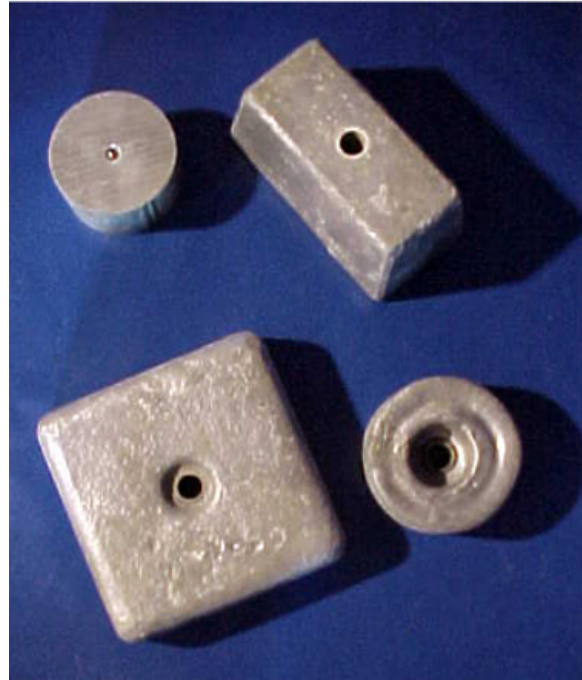
Aqueous Environment

Cast Magnesium Anodes

Protecting Submerged Structures

Applications for the use of magnesium anodes are not limited to structures buried in soil electrolytes. These powerful anodes have proven to be extremely effective at combating corrosion in certain aqueous environments as well. To address these applications, Corrpro manufactures a full line of aqueous magnesium anodes using the H-1 Grade C alloying standard. The anodes produce an open circuit potential of 1.53-1.55 volts, and are cast into circular, rectangular, square, and teardrop shapes.

Mounting designs on Corrpro's aqueous magnesium anodes were created to address a variety of installation possibilities. Anodes typically associated with condenser applications are constructed with a galvanized steel pipe core for mounting on metal studs. Hull-type anodes, on the other hand, are available with cast-in-steel galvanized mounting straps for weld or bolt-on attachment. In addition to these options, the aqueous magnesium anodes can be supplied with a plastisol coating. By employing this special barrier, current output and direction can be controlled, which not only improves the anode's performance, but also extends its life.



CHEMICAL COMPOSITION	
Element	Content %
Al	5.0-7.0
Mn	0.15 min.
Zn	2.0-4.0
Si	0.30 max
Cu	0.10 max
Ni	0.003 max
Fe	0.003 max
Other	0.30 max
Magnesium	Remainder

Also available in any other magnesium alloys.

Typical Applications

Corrpro aqueous magnesium anodes have a variety of fresh- and salt-water applications. These include ship hulls, barges, condensers, heat exchangers, chillers, traveling screens, piers, pilings, and lock and dam tainter and sluice gates. Because magnesium produces a high driving voltage, these types of anodes are also used for rapid polarization of structures in salt-water environments.



Corrpro Companies Europe Limited
 Adam Street, Bowesfield Lane, Stockton on Tees, TS18 3HQ
 Telephone: (01642) 614106 (8 lines) Telex: 587388
 Fax: (01642) 614100 E-mail: ccel@corrpro.co.uk

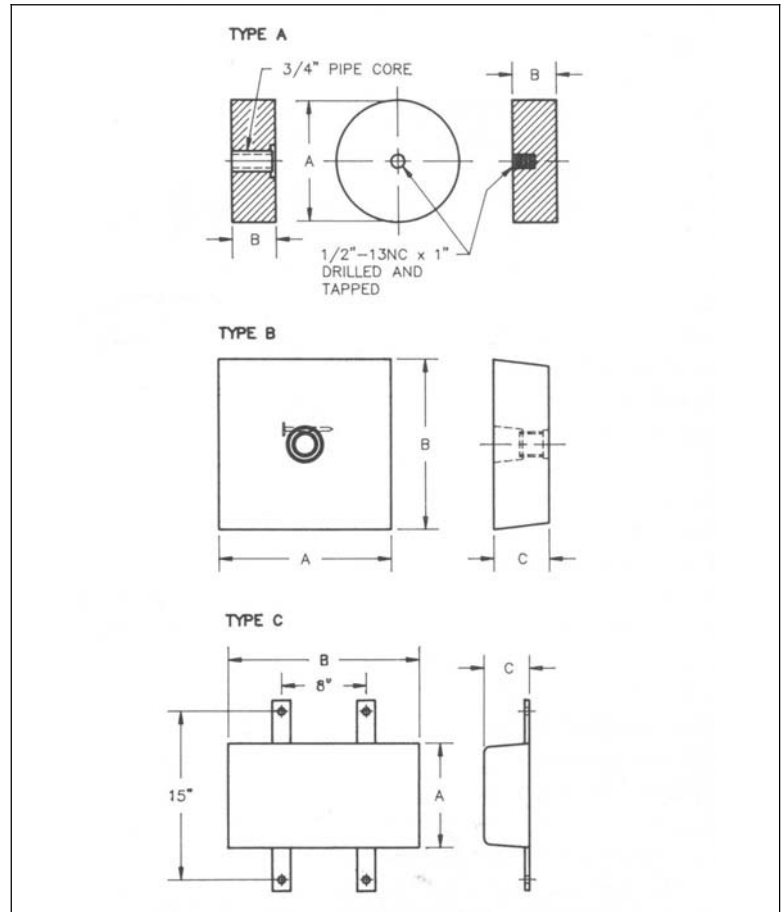
Aqueous Environment

Cast Magnesium Anodes

Ordering Procedure

Corrpro supplies a full line of aqueous environment magnesium anodes. To order the required anode for your structure, indicate that you need aqueous magnesium anodes, and specify the quantity desired, anode type, configuration type, and whether they should be plastisol coated or bare. All Corrpro aqueous anodes meet H-1 Grade C alloy standards unless otherwise specified.

Ordering Procedure Example	
ITEM	EXAMPLE
Quantity	200
Anode Material	Aqueous Magnesium
Alloy Composition (H-1 = Standard)	H-1 Grade C
Anode Type	24W
Coating (Bare or Plastisol, Bare = Standard)	Plastisol



Standard Dimensions and Shipping Weights

ANODE TYPE	CONFIG. TYPE	NOMINAL DIMENSIONS			NOMINAL BARE WT. lbs. (kg)
		in. (mm)			
		"A"	"B"	"C"	
2R5	A	5 (127)	2 (51)	-	3 (1.4)
2R5-DT	A	5 (127)	2 (51)	-	3 (1.4)
7.5S	B	8 (203)	8 (203)	2 (51)	7.5 (3.4)
15S	B	8 (203)	8 (203)	4 (102)	15 (6.8)
12W	C	9 (229)	9 (229)	2 (51)	12 (5.4)
24W	C	9 (229)	18 (457)	2 (51)	24 (10.9)
44W	C	9 (229)	18 (457)	4 (102)	44 (20.0)

Other sizes available.



Corrpro Companies Europe Limited
 Adam Street, Bowesfield Lane, Stockton on Tees, TS18 3HQ
 Telephone: (01642) 614106 (8 lines) Telex: 587388
 Fax: (01642) 614100 E-mail: ccel@corrpro.co.uk