

Flush-To-Grade

Cathodic Protection Test Stations

Suitable For Numerous Landscapes

Cathodic protection systems are utilized on structures located in water, on land, in rural, urban, industrial, and residential regions. To monitor the performance of these systems in areas where aesthetics are important or traffic flow is present, Corrpro offers flush-to-grade test stations. The stations are manufactured with tube sections made from various types of plastic materials. These special tube sections are lightweight, durable, corrosion resistant, and provide a watertight area for housing test lead terminals. Terminal boards are connected either to the test head cap or recessed into the plastic tube for easy access. The test boards can accommodate from one to nine terminals, which are made from nickel-plated brass to assure many years of accurate readings.

The quality of the lid utilized in flush-to-grade test stations is very important. The lids are the only means of identifying and locating the test stations, and provide protection against water penetration and vandalism. Corrpro flush-to-grade test stations are equipped with special locking lids, which are clearly marked for easy identification. The caps are made from either cast iron or high-impact-strength plastic, and are available with built-in magnets for locating by electromagnetic detectors.



Typical Applications

Corrpro flush-to-grade test stations are designed for use in areas where maintaining a landscape's aesthetic quality is important. The stations are also ideal for use in human or vehicle traffic areas, such as roads, parking lots, or sidewalks. Using the test stations, readings can be obtained to determine structure-to-soil potentials and the level of stray currents.

Authorized Distributor for the Following Manufacturers
Cott Manufacturing Company C. P. Test Services Handley Industries



Corrpro Companies Europe Limited

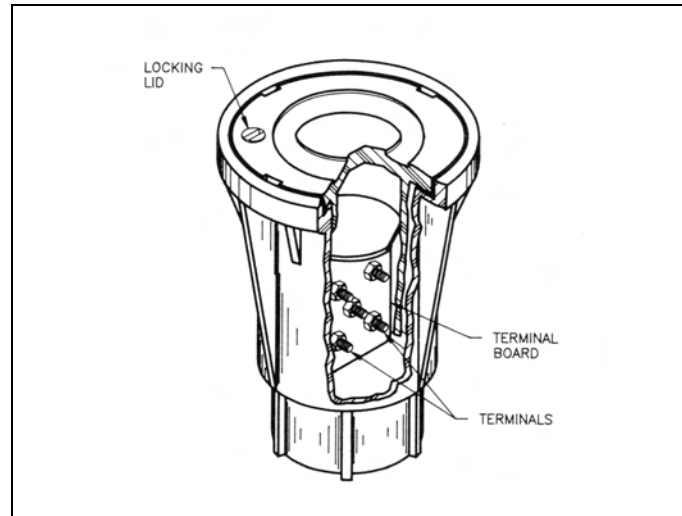
Adam Street, Bowesfield Lane, Stockton on Tees, TS18 3HQ
Telephone: (01642) 614106 (8 lines) Telex: 587388
Fax: (01642) 614100 E-mail: ccel@corrpro.co.uk

Flush-To-Grade Cathodic Protection Test Stations

Ordering Procedure

The flush-to-grade test stations supplied by Corpro are manufactured by several different companies. To order the required station for your application, indicate the brand and model desired, and specify the quantity and terminal configuration needed. An example is provided to help illustrate this process.

Ordering Procedure Example	
ITEM	EXAMPLE
Quantity	200
Test Station Manufacturer	Cott
Test Station Model	Flush Fink
Number of Terminals	5



Test Station Ordering Information

MANUFACTURER	MODEL	STANDARD TERMINAL LEADS	MAXIMUM TERMINAL LEADS
Cott	Flush Fink	5	11
	Street Fink	5	9
Handley	M2	2	2
	T2	1, 2, 5	5
	T4	1, 2, 5	5
C. P. Test Services	NM	4, 5, 7	7
	Mini	2	5
	Glenn	4	5

