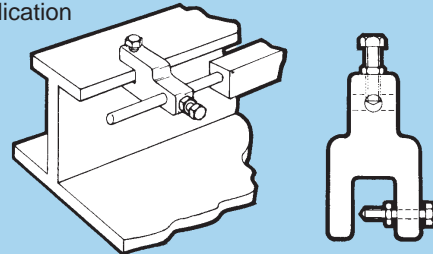


METHODS OF ATTACHING ANODES FOR HULL AND TANK APPLICATIONS

Galvanic anodes are normally clamped or welded into position by means of a mild steel insert which is cast into the anode. Illustrated below are typical methods of attachment.

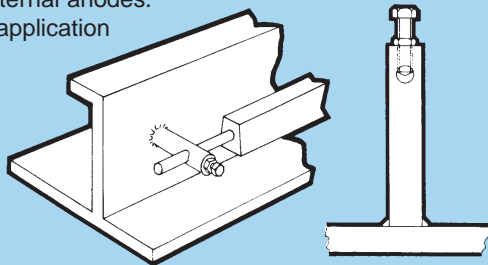
Internal – M Type clamp attachment

For internal anodes.
Tank application



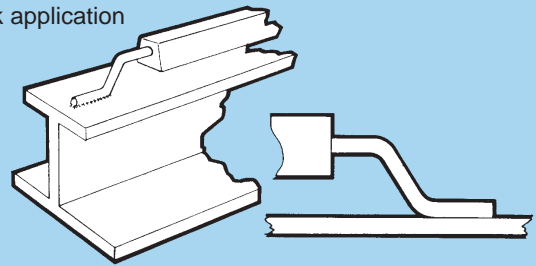
Internal – E Type stud attachment

For internal anodes.
Tank application



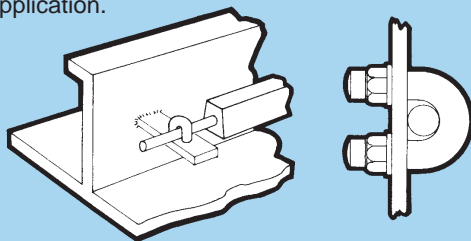
Internal – Z Type crank weld attachment

For internal anodes.
Tank application



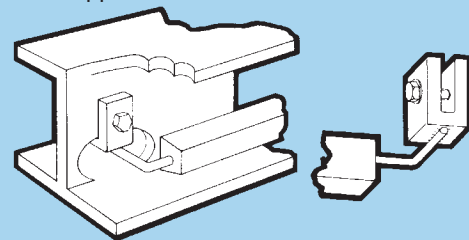
Internal – U Bolt attachment

For internal anodes.
Tank application.



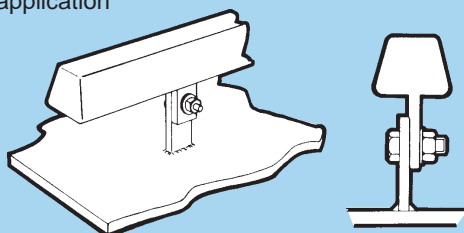
Internal – Clamp Type

For pitting prevention.
Tank Bottom application.



Internal – Stand Off Type attachment

For internal anodes.
Tank application



External – Aloline & Zincoline

High purity zinc alloy anodes.
External hull applications.

