

**INSULATION MATERIALS**

**Link-Seal<sup>®</sup>**  
**Casing End Seals**

**Corrosion Control in Casing Areas**

Active corrosion attack can occur within the annular space of a carrier pipe and its casing. Installing Link-Seals at the ends of your casing is one of the most effective ways for combating this problem. The seals are made from molded links of solid synthetic rubber which are connected together by corrosion resistant bolts and nuts. After the links are placed in the casing opening, the bolts are turned to create an air and watertight seal. This blocks the intrusion of moisture and other fluids to minimize the risk of corrosion activity. In addition, the seals electrically isolate and support the carrier pipe. Their flexible rubber construction also absorbs shock and vibration created by ground disturbances.

Link-Seals are designed for fast field installation. They are shipped pre-assembled in ten link units along with complete instructions. Custom diameter seals can be made in minutes simply by adding or removing individual links. Since the rubber sealing elements expand when the bolts are tightened, the Link-Seals will compensate for a considerable amount of both angular misalignment and eccentricity while still forming an efficient seal.

**Typical Applications**

Link-Seals control corrosion in casing areas by preventing the intrusion of ground water. They can be used with steel and cast iron pipe, copper and steel tubing, and thin wall conduit. The synthetic rubber compound that makes up the individual links is resistant to aging, ozone, and sunlight. Special Link-Seals are also available for environments with acids, alkalis, organic chemicals, and extreme temperatures (-67°F to +450°F).



**Ordering Procedure**

Corrpro stocks a complete assortment of Link-Seals to fit a variety of casing diameters. To order the right seals for your particular application, indicate that you need Link-Seal casing seals and specify the quantity, carrier outside diameter, casing inside diameter, and type of pipe. An example is provided to help illustrate this process.

<b>Ordering Procedure Example</b>	
<b>ITEM</b>	<b>EXAMPLE</b>
Quantity	<i>9</i>
Carrier O.D.	<i>4 in.</i>
Casing I.D.	<i>8 in.</i>
Type of Pipe	<i>Steel</i>

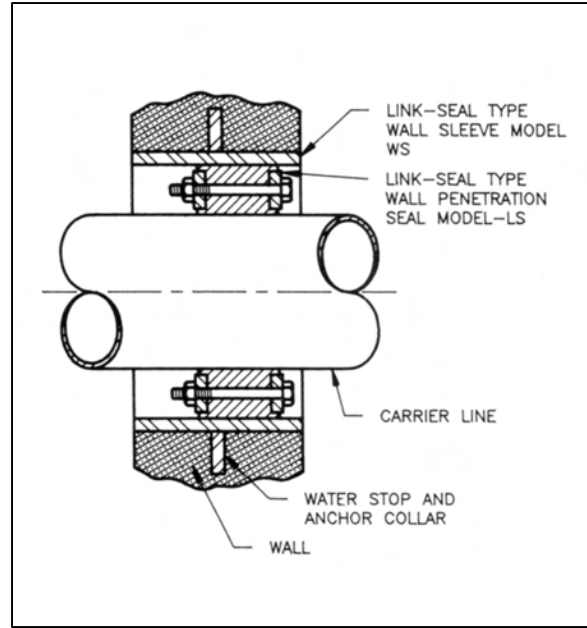


**Corrpro Companies Europe Limited**  
 Adam Street, Bowesfield Lane, Stockton on Tees, TS18 3HQ  
 Telephone: (01642) 614106 (8 lines) Telex: 587388  
 Fax: (01642) 614100 E-mail: ccel@corrpro.co.uk

## Link-Seal® Casing End Seals

**400 SERIES** FOR CASING TWO PIPE SIZES LARGER THAN CARRIER PIPE  
(Maximum coating 3/16" thick, casing pipe walls should not exceed .500" except for sizes 12", 14" and 16" which should not have a wall thickness greater than .312".)

CARRIER X CASING PIPE (API & IPS Pipe Sizes)	COMPLETE CASING SEAL ASSEMBLY IS COMPOSED OF:			BASIC LINK-SEAL MODEL	CENTERING BLOCK LINK MODEL
	Total Links	Plain Links	Centering Block Links		
2" x 6"	5	5	0	LS 475 C	-
3" x 6"	4	4	0	LS 425 C	-
4" x 8"	7	7	0	LS 475 C	-
6" x 10"	10	10	0	LS 475 C	-
8" x 12"	12	12	0	LS 475 C	-
10" x 14"	10	10	0	LS 425 C*	-
12" x 16"	12	12	0	LS 425 C*	-
14" x 18"	13	9	4	LS 400 C	LS 400 CB
16" x 20"	15	11	4		
18" x 22"	17	13	4		
20" x 24"	18	13	5		
22" x 26"	21	16	5		
24" x 28"	22	17	5		
26" x 30"	23	17	6		
28" x 32"	25	18	7		
30" x 34"	27	20	7		
32" x 36"	29	21	8		
34" x 38"	30	22	8		
36" x 40"	32	24	8		



**300 SERIES** FOR CASING ONE PIPE SIZE LARGER THAN CARRIER PIPE  
(Maximum coating 0.60, casing pipe wall should be schedule 40 or less except for sizes 8" and 10" which should have wall thickness of schedule 30 or less. When 12" casing is used, specify schedule 20 wall or less.)

CARRIER X CASING PIPE (API & IPS Pipe Sizes)	COMPLETE CASING SEAL ASSY IS COMPOSED OF:		BASIC LINK-SEAL MODEL
	Total Links	Plain Links	
1/2" x 2-1/2"	3	3	LS 300C
3/4" x 3"	4	4	LS 300C
1" x 3"	4	4	LS 300C
1-1/4" x 3-1/2"	5	5	LS 300C
1-1/2" x 3-1/2"	5	5	LS 300C
1-1/2" x 4"	3	3	LS 325C
2" x 4"	6	6	LS 300C*
2-1/2" x 5"	4	4	LS 325C*
3" x 5"	8	8	LS 300C
3-1/2" x 6"	5	5	LS 325C*
4" x 6"	10	10	LS 300C
6" x 8"	15	15	LS 300C
8" x 10"	19	19	LS 300C
10" x 12"	22	22	LS 300C

**500 SERIES** FOR CASING THREE PIPE SIZES LARGER THAN CARRIER PIPE  
(Maximum coating 3/16" thick, casing pipe walls should not exceed .500" except for sizes 16" and 18" which should not have a wall thickness greater than .312".)

CARRIER X CASING PIPE (API & IPS Pipe Sizes)	COMPLETE CASING SEAL ASSEMBLY IS COMPOSED OF:			BASIC LINK-SEAL MODEL	CENTERING BLOCK LINK MODEL
	Total Links	Plain Links	Centering Block Links		
4" x 10"	6	6	0	LS 500 C	-
6" x 12"	8	8	0	LS 500 C	-
8" x 14"	9	9	0	LS 500 C	-
10" x 16"	10	7	3	LS 525 C*	LS 525 CB
12" x 18"	12	9	3	LS 525 C*	LS 525 CB
14" x 20"	13	9	4	LS 500 C	LS 500 CB
16" x 22"	15	11	4		
18" x 24"	16	12	4		
20" x 26"	18	13	5		
22" x 28"	19	14	5		
24" x 30"	21	15	6		
26" x 32"	23	17	6		
28" x 34"	24	18	6		
30" x 36"	26	19	7		
32" x 38"	27	20	7		
34" x 40"	29	21	8		
36" x 42"	30	22	8		
42" x 48"	36	27	9		
48" x 54"	41	30	11		
54" x 60"	45	33	12		

\*Best for applications where the annular space is limited due to heavy coating on carrier pipe or extra thick casing wall.



**Corrpro Companies Europe Limited**  
 Adam Street, Bowesfield Lane, Stockton on Tees, TS18 3HQ  
 Telephone: (01642) 614106 (8 lines) Telex: 587388  
 Fax: (01642) 614100 E-mail: ccel@corrpro.co.uk