

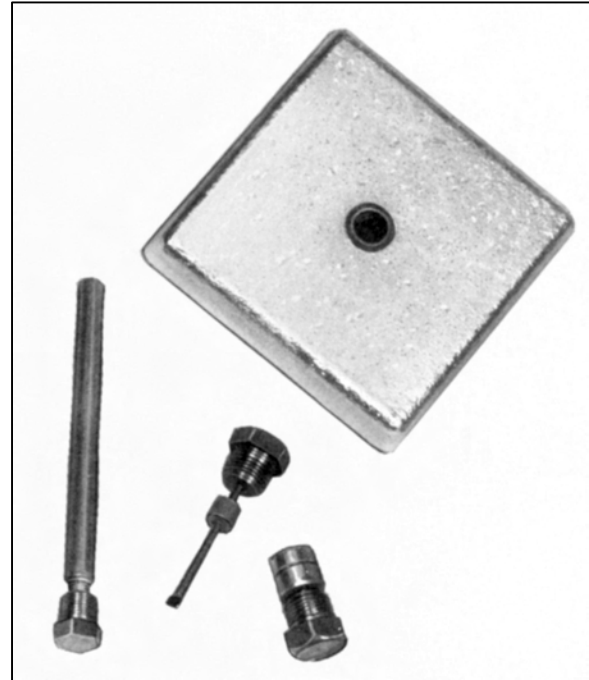
SACRIFICIAL ANODES

Pencil, Segmented, and Slab Cast Zinc Anodes

For Confined Installation Areas

Corrosion attack is not limited only to those areas on steel structures, which are easily accessible or visible to the naked eye. This destructive process also occurs in tightly confined spaces on submarines, in compartments on small vessels, and in numerous other restricted locations. To combat corrosion in these areas Corrpro manufactures pencil, segmented, and slab zinc anodes. The anodes are made using 99.99% pure high grade zinc, which is custom-blended with nominal amounts of aluminum and cadmium to meet military specification MIL-A-18001. They have been rated to deliver an open circuit voltage of 1.05 (with respect to an Ag/AgCl reference cell), and to furnish 354 amp-hrs/lb.

Corrpro solid and segmented pencil anodes are supplied standard with free-cutting brass retaining plugs, which are resistant to corrosion and allow for easy anode installation and replacement. The segmented anodes are offered in two styles for assembly by either self-contained galvanized cores or separate stainless steel core rods. Slab zinc anodes offered by Corrpro are cast in both square and circular configurations. They may be purchased with or without pipe bushings and can be supplied with insulating washers.



Typical Applications

The unique design of Corrpro's pencil, segmented, and slab anodes makes them ideally suited for the protection of structures in numerous aqueous environments. Their use in high-temperature (above 140°F) or high-alkaline (above 9.5 pH) areas should be avoided.

CHEMICAL COMPOSITION

Element	Content %
Al	0.1-0.5
Cd	0.02-0.07
Fe	0.005 max
Pb	0.006 max
Cu	0.005 max
Zinc	Reminder



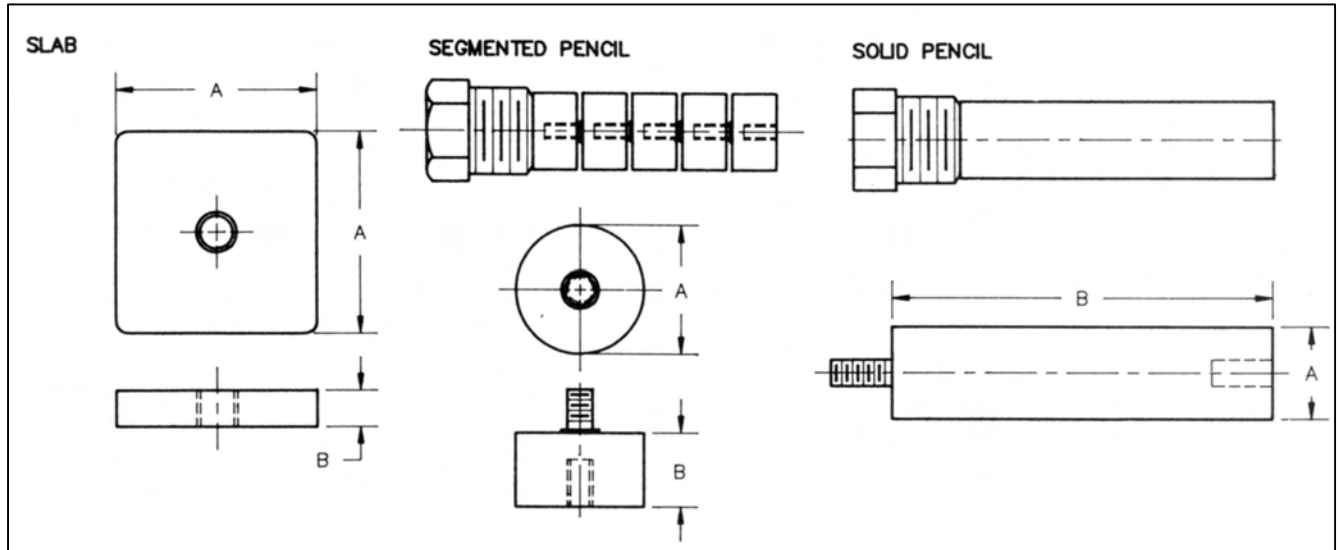
Corrpro Companies Europe Limited

Adam Street, Bowesfield Lane, Stockton on Tees, TS18 3HQ

Telephone: (01642) 614106 (8 lines) Telex: 587388

Fax: (01642) 614100 E-mail: ccel@corrpro.co.uk

Pencil, Segmented, and Slab Cast Zinc Anodes



Ordering Procedure

Corrpro offers a wide variety of smaller-sized zinc anodes for use in many different protection projects. To order the required anode for your structure, indicate that you need a solid pencil, segmented pencil, or slab zinc anode and specify the quantity desired, the anode type, and retaining plug style. An example is provided to help illustrate this process.

Ordering Procedure Example	
ITEM	EXAMPLE
Quantity	200
Anode Material	Zinc Pencil
Order Number	P-500
Retaining Plug	PP-375-B
Plug Thread Size	3/8 in.

Standard Dimensions and Shipping Weights

ANODE TYPE	ORDER NO.	NOMINAL DIMENSIONS In. (mm)		USE WITH RETAINING PLUG NO.	PLUG THREAD SIZE* in. (mm)
		"A"	"B"		
Solid Pencil	P-375	.375 (9.5)	1 to 6 (25.4-152.4)	PP-250-B	1/4 (6.35)
Solid Pencil	P-500	.500 (12.7)	1 to 6 (25.4-152.4)	PP-375-B	3/8 (9.53)
Solid Pencil	P-625	.625 (15.9)	1 to 6 (25.4-152.4)	PP-500-B	1/2 (12.7)
Solid Pencil	P-750	.750 (19.1)	1 to 6 (25.4-152.4)	PP-750-B	3/4 (19.1)
Solid Pencil	P-1050	1.050 (26.7)	1 to 6 (25.4-152.4)	PP-1000-B	1 (25.4)
Segmented Pencil	G-500	.500 (12.7)	.750 (19.1)	GP-375	3/8 (9.53)
Segmented Pencil	G-625	.625 (15.9)	.750 (19.1)	GP-500	1/2 (12.7)
Segmented Pencil	G-825	.825 (21.0)	.750 (19.1)	GP-750	3/4 (19.1)
Segmented Pencil	G-1050	1.050 (26.7)	.750 (19.1)	GP-1000	1 (25.4)
Segmented** Pencil	S-438	.438 (11.1)	.500 (12.7)	SP-250	1/4 (6.35)
Segmented** Pencil	S-500	.500 (12.7)	.500 (12.7)	SP-500	1/2 (12.7)
Segmented** Pencil	S-813	.813 (20.7)	.500 (12.7)	SP-750	3/4 (19.1)
Slab	SP S-6000	6 (152.4)	1 (25.4)	N/A	N/A

*Thread size to be attached to structure.

**Specify rod assembly.



Corrpro Companies Europe Limited

Adam Street, Bowesfield Lane, Stockton on Tees, TS18 3HQ

Telephone: (01642) 614106 (8 lines) Telex: 587388

Fax: (01642) 614100 E-mail: ccel@corrpro.co.uk